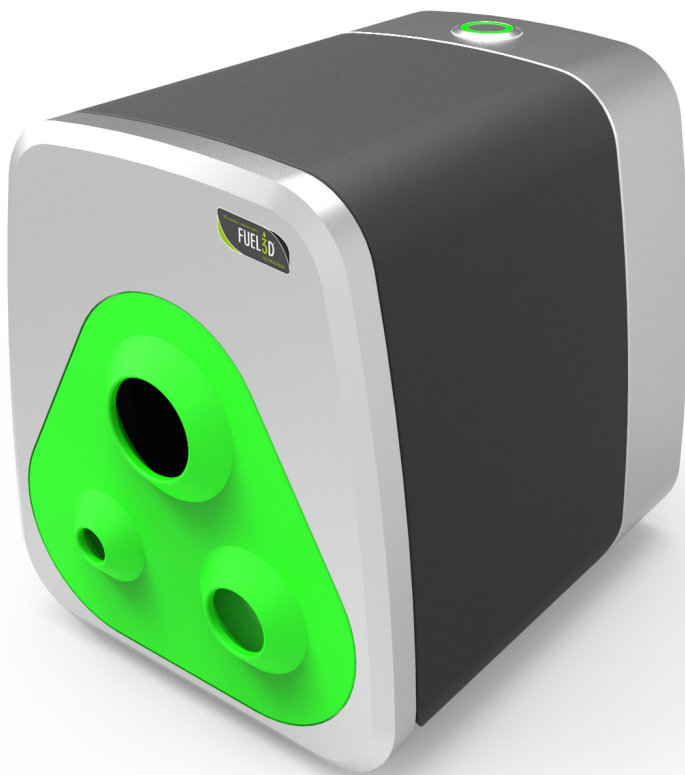
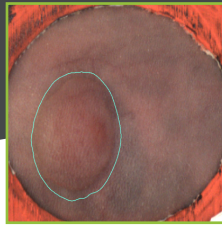


Introducing:

Fuel3D[®] Desktop Scanner



Example applications:

- Replacement for calliper measurement systems;
- Treatment tracking for wounds and melanomas;
- Next generation fingerprinting;
- Product and component quality assurance;
- Biometric security systems.

FUEL3D[®]

The 3D imaging and measurement system.

Fuel3D® Desktop Scanner

The 3D imaging and measurement system.

Features:

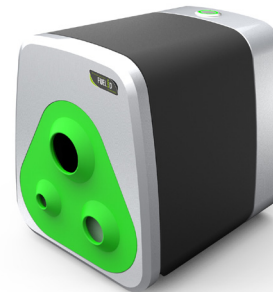
- **Volume measurement:** measure shape and volume of features;
- **Compact:** size and shape perfect for desktop applications;
- **High-speed, high-resolution:** capture incredible detail down to 45 microns (0.045mm) in 0.14 seconds;
- **Application development:** available via Fuel3D's Software development kit (SDK) and support expertise;
- **Full-color:** capture accurate 3D color as well as the shape of an object.

Application:

- Currently being deployed by a leading global pharmaceutical company to replace calliper measurement analysis;
- Option to develop into other measurement applications:
 - To increase accuracy beyond other calliper measurement processes;
 - To assess severity or treatment recovery of wound care skin lesions and melanomas;
 - For biometric fingerprint, palm veins or hand geometry scanning;
 - To analyze components and product quality.

Application development:

- Provides a scalable and configurable path for the development of new and exciting 3D scanning solutions;
- Fuel3D SDK 1.3 is available to purchase and comes with Fuel3D expert engineering support. The combined SDK and support package provides:
 - Access to Fuel3D's core IP of image capture and reconstruction;
 - Custom configuration of the SDK for each customer to tailor performance for specific applications;
 - A development environment to integrate end-user applications;
 - Demo applications, technical documentation and engineering support.



PRODUCT SPECIFICATION

Scan volume	Approx. 2.6"/66mm x 4"/100mm (4.7"/120mm diagonal) in a single capture
Scanning technology	Fusion of stereoscopic and photogrammetric data
Operating distance	5.9" +/- 0.8" (150mm +/- 20mm)
Product dimensions	W: 7.9"/200mm H: 7.9"/200mm D: 7.9"/200mm
Connectivity	USB type A into PC, USB type B into scanner
Weight	Approx. 6.5lbs/3kgs

SOFTWARE SPECIFICATION

Compatible scientific software	BioVolume™ Software (available early 2Q17)
Software development kit (SDK)	SDK 1.3 (available 4Q16)
Fuel3D Studio software	Version 3.0 Beta (available 1Q17) Version 2.3 Alpha (available today)
Other SDK compatible hardware	SCANIFY® (available today) Fuel3D Mirror Scanner (available 1Q17)
Exported file types	STL, OBJ, PLY and 3D PDF
Maximum resolution	Approx. 45 microns (0.045mm)
Single scan size (average)	STL: 31MB PLY: 17MB OBJ: 70MB
Minimum recommended computer specifications	8GB RAM, 5GB hard disk space Quad-core processor
Supported operating systems	Windows 7+ (64 bit)



www.fuel-3d.com



USA: 1 866 784 0972



OUTSIDE-USA: +44(0)3300 249502



info@fuel-3d.com